

1st February 2024



Issue 1

Principals Report

PAUL MARSHALL



Welcome back

Welcome back to all of our students and families. We are looking forward to an exciting year with many activities and learning already planned. We hope you had a relaxing and restful break and are ready to jump in to 2024.

Yarning day

Thank you to the families that were able to make it to our “Yarning day”. The feedback I have received so far has been extremely positive. Families were able to meet with the classroom staff and discuss the best ways to support their child. It was the first step in creating positive connections between home and school. I’m keen to hear feedback from others about what they thought of the day. Connection between school and home is vital, we want to make positive connections with all of families. This includes communicating with families via their preferred method, creating opportunities for families to visit the school and most importantly celebrate the successes of all students. We also want to connect with the community and other schools, especially the primary school. Keep an eye out for upcoming events

SSG day

Our SSG day will be Friday 23rd February. SSG’s differ from our Yarning day in that SSG’s focus specifically on learning goals. Students (and younger siblings) are welcome to attend. If you are not able to make it in person we are happy to complete it via phone call or online.

Lunch orders

Lunch orders are Monday, Wednesday and Friday. These are completed online. Information is included in this newsletter and on Facebook. The menu is amazing, fresh and is reasonably priced.

Start times

Students can be on site from 8:45am. This is when staff go on duty. The health and safety of students is paramount to us, as it is to you.



FEBRUARY

23rd SSG—Student Free

MARCH

4th & 5th Swimming Cohuna

21st School Council

28th End of Term 1

29th Good Friday

APRIL

15th Term 2 starts

18th Yr10

19th School Photos

29th Good Friday



Echuca Twin Rivers
Specialist School
acknowledges the
history, culture,
diversity, and value of
all Aboriginal and
Torres Strait
Islanders, and pays
respect to their elders
past and present, as
well as acknowledging
future generations.



New staff

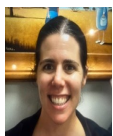
We are excited to announce several new staff, along with some returning staff members.



Stephanie Ashley- Performing arts and tutor F-6



Sarah Cherry- Performing arts and tutor 7-12



Emma Taylor- F-2



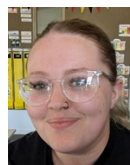
Bonnie Webb- VL



Sarah Ollerenshaw- F-2



Luke Gray- VL



Tyana Tucker- F-2



Leanne Boyd- VL

Swimming sports

We will be holding our swimming sports in Cohuna again this year. Cohuna is the perfect setting for our sports because many of our students come from there, it is quiet and we can book out the entire pool area. Plus, there is a water slide! The sports will be held on Monday 4th March (Grades 3-6) and Tuesday 5th March (Years 7-12).

Buses

A reminder to call the bus and school if your child is absent. The numbers are always available on the newsletter. Also, contact the school and the bus if your address changes.

School council

Shortly we will be holding school council elections. Contact me if you would like to be on school council. We meet twice a term to discuss the running of the school. It is wonderful to get parent involvement to shape our amazing school.

****MENTAL HEALTH PRACTITIONER****

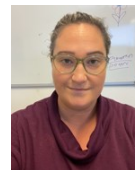
Mental Health Practitioner Initiative in Secondary Schools

Since the beginning of the year, Shayna Davis has been employed in the MHP role 2 days per week. Shayna's role has been supporting the wellbeing of our Secondary students. For more information on the Mental Health Practitioners in Specialist Schools initiative see the Department website.

[Mental health practitioners in secondary and specialist schools | Victorian Government \(www.vic.gov.au\)](https://www.vic.gov.au/mental-health-practitioners-in-secondary-and-specialist-schools)

Please note, referral and parental/carers consent will be required for the MHP service. There will be an activity put on Sentral under "Mental Health Practitioner Initiative" for you to fill in if you are happy for Shayna to see your child.

If you would like to speak to Shayna to learn more about the MHP service, please contact her on 5410 7700 or via email: shayna.davis@education.vic.gov.au



****NDIS NAVIGATOR****

New National Disability Insurance Scheme (NDIS) Navigator service to support parents and carers

Our school is excited to be part of the NDIS Navigators initiative. NDIS navigators will be in all Victorian government schools by 2025 to help you navigate and understand the NDIS and get the most out of the supports available for your child.

Shayna Davis will be taking on the NDIS Navigator role for 2 days per week in addition to her Mental Health Practitioner role.

Shayna can assist with:

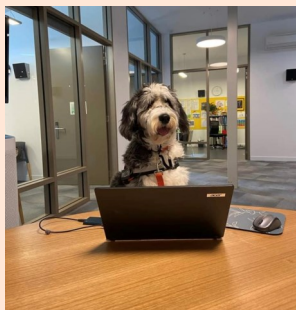
- Providing information and advice on the NDIS and available supports, including guidance on where to look for services and supports. NDIS navigators will not recommend specific providers but may provide advice for parents/carers on how to make the best selection for their child.
- Provide guidance to parents/carers on how to apply to the NDIS and what they need to consider, including any documented evidence to support the application.
- Promoting the review processes available to parents/carers if their child's NDIS plan is not meeting their needs.
- Assisting parents/carers to access NDIS Local area coordination partners for advice and support.
- Support parents/carers to understand the structure of the NDIS and how to navigate and engage with the system, of

Advice on how to raise questions or concerns with the NDIA or NDIS funded organisations.

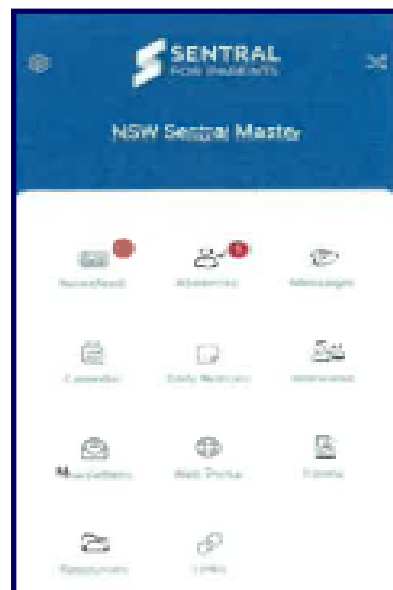
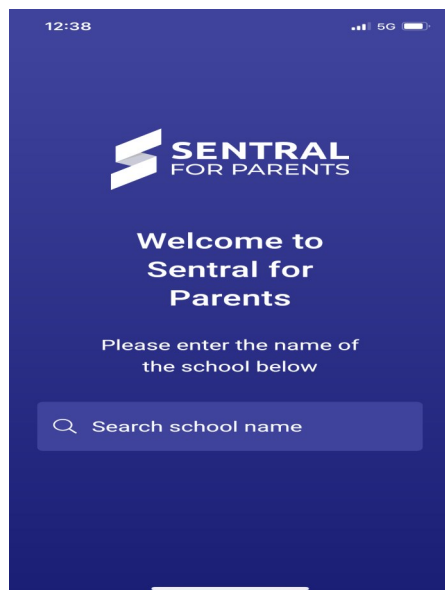
Shayna will start making connect with families in 2024 to offer NDIS support.

Please contact Shayna on 5410 7700 or via email: shayna.davis@education.vic.gov.au

Willow the Wellbeing Dog



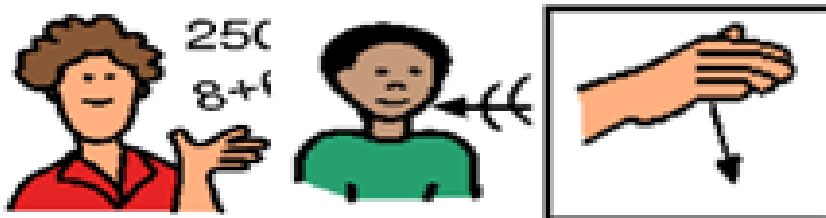
SENTRAL—PARENT PORTAL



We would like to encourage all our families/carers to use the Sentral Parent Portal. It is a free app that can be downloaded on your phone, iPad or computer. This app allows you to enter future and current absences, contact the school and your child's teacher, access the school calendar, student reports, book parent teacher interviews, view school documents and receive notification and messages from the school. New families and families that have not accessed this portal will receive information regarding this today. If you require any help at all with this please do not hesitate to contact Jenni in the office on 5410 7700 or in person.

PBS Targeted Behaviour

We follow directions from all staff



2024 BUS STAFF

Rushworth:

0418 322 861

Neil, Anne & Sharon

Cohuna:

0418 847 627

Alan & Jess

Elmore:

0427 685 124

**Bill, Kevin, Jan,
Sandra & Mirinda**

Kyabram:

0448 981 278

Peter & Megan



MESSAGE FROM THE OFFICE



Tracey



Jenni

The CSE Funding application is only for families who circumstances have changed or haven't previously filled in an applications. Currently CSEF families to do need to reapply.



FINANCIAL ASSISTANCE INFORMATION FOR PARENTS

Every Victorian child should have access to the world of learning opportunities that exist beyond the classroom. The Camps, Sports and Excursions Fund helps ensure that no student will miss out on the opportunity to join their classmates for important, educational and fun activities. It is part of making Victoria the Education State and the Government's commitment to breaking the link between a student's background and their outcomes.

CAMPS, SPORTS & EXCURSIONS FUND (CSEF)

School camps provide children with inspiring experiences in the great outdoors. Excursions encourage a deeper understanding of how the world works while sports teach teamwork, discipline and leadership. All are a part of a healthy curriculum.

CSEF is provided by the Victorian Government to assist eligible families to cover the costs of school trips, camps and sporting activities.

If you hold a valid means-tested concession card or are a temporary foster parent, you may be eligible for CSEF. A special consideration category also exists for asylum seeker and refugee families. The allowance is paid to the school to use towards expenses relating to camps, excursions or sporting activities for the benefit of your child.

The annual CSEF amount per student is:

- \$150 for primary school students
- \$250 for secondary school students

MORE INFORMATION

For more information about CSEF visit:

<https://www.education.vic.gov.au/about/programs/Pages/csef.aspx>

HOW TO APPLY

New applicants should contact the school office to obtain a CSEF application form or download from the website below.

If you applied for CSEF at your child's school last year, you do not need to complete an application form this year unless there has been a change in your family circumstances.

You only need to complete an application form if any of the following changes have occurred:

- **new student enrolments;** your child has started or changed schools this year.
- **changed family circumstances;** such as a change of custody, change of name, concession card number, or new siblings commencing this year.

Check with the school office if you are unsure.



Conveyance Allowance Applications

Eligibility

An application on behalf of a student may be submitted if the student is:

- a Victorian resident;
- school aged and enrolled three or more days per week at a school; and
- attends a specialist school

A student who meets the above requirements may be eligible if they:

- reside 4.8km or more by the shortest practicable route from the school attended

by private car from home to nearest bus stop or to school

If you reside 4.8km from your nearest bus stop & you think you may be eligible for Conveyance Allowance please contact Tracey or Jenni for an application form.

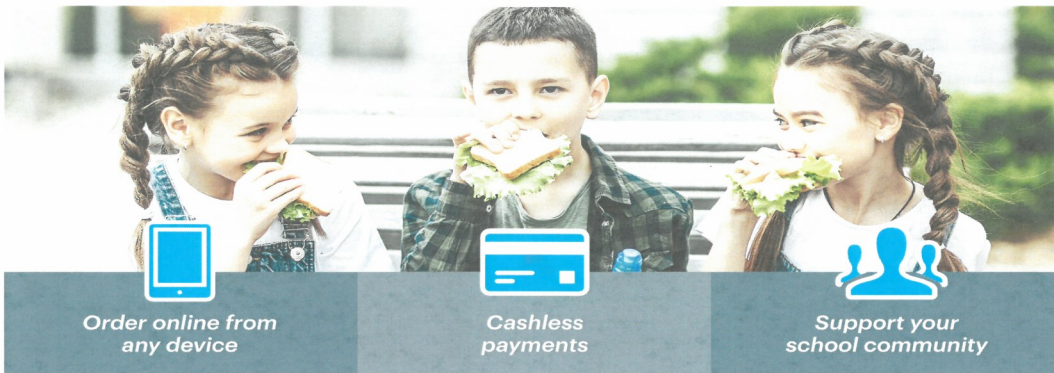
Application forms need to be in no later than 1st March 2024

LUNCH ORDERS

Below are details on how to log into the online ordering system and the menu. If you have any queries please do not hesitate to contact the school.



quickcliq.com.au



Order online from
any device

Cashless
payments

Support your
school community



Getting started is
easy. Simply scan the
QR Code

- It's free to set up & easy to use.
- Register at quickcliq.com.au
 - SIGN UP & complete the registration form.
- Receive a link via email to ACTIVATE your account before logging in.
- ADD STUDENT (your child's details), select their school & save to your account.
- ADD CREDIT to your online wallet before ordering or pay as you go using a credit or debit card.
- Select MEAL ORDER & you're good to go.

Orders can be placed up to 28 days in advance. You can view your completed orders via the Active Orders or Transaction History tabs in your account.

Register today to discover the QuickCliq advantage

- ✓ Tired of scrounging around for loose change every morning before your kids run off to school? With QuickCliq, lunch money is a thing of the past.
- ✓ One family, one account – you will have one unique and secure login to manage all your children's orders, even if they attend different schools. QuickCliq saves you time and gives you complete visibility over your family's needs.
- ✓ QuickCliq is designed with mobile access in mind. Simply login to add credit to your online wallet, or pay as you go using your credit or debit card. All from the convenience of your smartphone or tablet.
- ✓ To top up your account you have three options: Direct Debit / Credit Card / PayPal.



Did you know your school is a QuickCliq school?

Sign up & register today at quickcliq.com.au to get started.



Support when you need it: Monday to Friday, 7.30am–4.00pm
1300 11 66 37 | support@quickcliq.com.au





Welcome to QuickCliq ORDER YOUR CHILD'S MEALS ONLINE

New to QuickCliq? SIMPLY REGISTER AT:
www.quickcliq.com.au

Select SIGN UP and fill out your details to register

Once you have an account, log in & select ADD STUDENT and enter in your child's details: Name, School, Year, Class & Teacher.

TO ORDER: Select MEAL ORDER from your account homepage.

Step 1 - Select Child

Select a Child
Please select a child
Health Warnings
Not set
Canteen Notes
View in the past

Step 2 - Select Date

Select a Date
Please select the date you are ordering for
16/12/2019
Order together

Step 3 - Select your items from the various break options

Select Meals
Add to Cart
First Break
Second Break
Process Items
Process Items
\$0.00
\$0.00
Add to Cart
Cart Item Menu to PDF

Step 4 - Click PAY & PLACE ORDER

Confirm Order
Confirm your order
Current First Break Order Items
Dessert \$1.00
Service charge \$0.00
Sub Total \$1.00
Additional Instructions
Use this field to add any additional instructions for this order (Health warnings that you provided will appear on the order by default)
Charities \$0.00
Voucher
Grand Total \$1.00
Pay & Place Order

PLEASE PLACE YOUR ORDER BEFORE THE CUT OFF TIME
If you need any assistance ordering online, please contact QuickCliq - 1300 11 66 37 or support@quickcliq.com.au



Order via QuickCliq

Follow the instructions to place a Meal Order:

Go to: www.quickcliq.com.au

Log in using your QuickCliq username and password.

PLEASE ENSURE ALL YOUR STUDENT DETAILS ARE UP TO DATE, Health warnings in your student profile should be completed if your child has any food allergies/ intolerances.

Select **MEAL ORDER** button.

Step 1 – Select CHILD

Step 2 – Select DATE

Please Note: Meal Orders must be placed by ORDER cut-off for selected date, or the order will default to the next open canteen day

*Orders may be placed up to 4 weeks in advance

Step 3 – Select items – when complete select **ADD TO CART**

Repeat step for each required break

Step 4 – Select **PAY & PLACE ORDER** follow the payment option prompts before leaving the page.

*An order confirmation email will then be sent to your email login address confirming the order is successful.

*To check or cancel any pending orders must be before **Meal Order cut off**:

- Select **ACTIVE/CANCEL ORDERS** tab on the homepage.

*To check payment details:

Select **TRANSACTIONS** tab on the homepage.

Support when you need it: Monday to Friday, 7.30am – 4.00 pm

Call: 1300 11 66 37 Email: support@quickcliq.com.au

Our Vision

To provide
inclusive and
engaging
learning that
empowers all
students for life



Our Values

Be Respectful
Be Inclusive
Be Responsible



Fit foodie. CANTEENS	
SANDWICHES, ROLLS AND WRAPS	
● Ham	\$4.40
● Ham + Cheese	\$5
● Ham, Cheese + Tomato	\$5
● Ham + Salad	\$6.50
● Tuna + Salad	\$6.50
● Chicken + Salad	\$6.50
● Salad	\$5.50
● Egg + Mayo	\$5.50
● Egg + Lettuce	\$6
● Cheese	\$4.40
● Cheese + Vegemite	\$4.40
● Cheese + Tomato	\$4.40
● Vegemite	\$4.40
SUSHI	
● Tuna (GF)	\$5
● Tuna + Avocado (GF)	
● Chicken Teriyaki	
● Crispy Chicken + Avocado	
Sushi available on: Echuca East, 208 - Tuesday Twin Rivers, Specialist School, St Marys, Moama Grammar - Wednesday Echuca College - Thursday	
PLATES	
● Salad (GF)	\$7.50
Lettuce, Tomato, Cucumber, Cheese, Beetroot, Pineapple, Egg Chicken or Ham	
● Nibbles	\$7.50
Cheese, Crackers, Veggie Sticks, Ham, Tzatziki	
HOT FOOD	
● Beef Burger	\$7.20
● (with the lot +1)	
● Chicken Schnitzel + Cheese	\$7.20
● Hot Chicken Roll + Gravy	\$7.20
● Corn on the Cob (GF)	\$2.20
● Lasagna	\$6.60
● Spaghetti	\$6.60
● Mini Pizza	\$5
● Warm Chicken Wrap	\$7.50
Lettuce, Cheese, Tomato + Mayo	
● Veggie Pastie	\$5.50
● Chicken Noodle Soup	\$6.60
with Bread Roll	
● Steamed Dim Sim	\$1.50
● Hotdog	\$5
● Hotdog + Cheese	\$5.30
● Nachos, Salsa + Cheese (GF)	\$6
(with light sour cream +.50c)	
● Wedges	\$6
(with light sour cream +.50c)	
● Beef Pie	\$5
● Beef Pie (GF)	\$6.50
● Sausage Roll	\$4.50
● Macaroni + Cheese	\$6.60
● Party Pie	\$2
● Hash Brown	\$1.50
● Chicken Nuggets	
3	\$3.70
6	\$6
TOASTIES + JAFFLES	
● Cheese	\$4.40
● Ham + Cheese	\$5
● Baked Beans	\$5
● Spaghetti	\$5
(with cheese +.30c)	
● Chicken + Pesto Foccacia	\$7
● Salami + Cheese Foccacia	\$7
Sauce	.40c
BBQ, Tomato, Soy	
Our colour coded system has been created with industry dieticians.	
● = Everyday foods ● = Occasional foods	

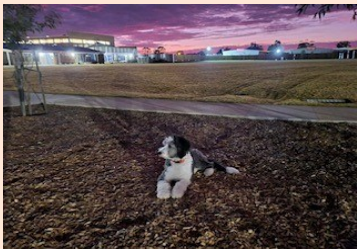
Fit foodie. CANTEENS	
POWERED BY QuickClick	
ONLINE ORDERS AVAILABLE ON QUICKCLICK BY 8:30AM (LATE ORDERS WILL NOT BE PROCESSED)	
Please clearly specify on your order:	
Student Name + Classroom	
SNACKS	
● Fresh Fruit (GF)	\$2.20
● Fruit Salad (GF)	\$5
● Yoghurt + Berries	\$4.50
● Yoghurt, Berries + Granola	\$5
● Vanilla Custard (GF)	\$4
● (add poached fruit +.50c)	
● Veggie Sticks + Dip (GF)	\$4.50
● Jelly Cup (GF)	\$3.30
● Popcorn Plain (GF) or flavoured	\$3
● JJ's	\$3
● Red Rock Deli Chips	\$3
● Lemon Slice	\$2.50
● Hedgehog	\$2.50
● Brownie	\$2.50
● Cookies	\$2
● Milo Balls (3)	\$2.50
● Chocolate Mousse (GF)	\$4
● Berry Muffin	\$3
● Iced Cup Cake	\$3
STAFF OPTIONS ONLY	
● Peanut Butter Protein Balls	\$3.50
● Raspberry + White Chocolate Muffin	\$4.50
● Chicken + Pesto Foccacia	\$7.20
● Salami + Relish Foccacia	\$7.20
● Sweet Chilli Chicken Wrap	\$7.50
● Chicken Schnitzel Roll	\$7.20
● Hamburger with the lot	\$8.20
FROZEN	
● Zing	\$1.50
● Frozen Pineapple Ring	\$2
● Lemonade Icy Pole	\$3
● Mini Calippo	\$2.50
● Large Calippo	\$3.50
● Paddlepop	\$3
● Cyclone Twist	\$3
● Slushy	\$3
DRINKS	
● Water	\$3
● Nippy's	\$3.40
● Chocolate or Strawberry	
● Warm Milo	\$3
● Apple Juice	\$3.40
● Orange Juice	\$3.40
● Apple + Blackcurrant	\$3.40
All baked goods, lasagna, spaghetti and soups are homemade.	
*Some items not available at delivery schools (GF) Gluten Free	
Our colour coded system has been created with industry dieticians.	
● = Everyday foods ● = Occasional foods	

COMMUNITY NEWS

OUR SCHOOL

Echuca Twin Rivers Specialist School provides education for children ages 5-18 years with intellectual and associated disabilities. It services the Campaspe and Murray Shire area.

The school prides itself on having an open and welcoming environment that encourages parent and community participation.



**\$5 DONATED
BACK TO
YOUR SCHOOL?**

Ask one of our FIT EXPERTS in-store

CARERS MORNING TEA AT OAK DENE

KYABRAM HERITAGE HOUSE & GARDEN

PLEASE JOIN US FOR A LOVELY
MORNING TEA & A CHANCE TO CHAT
TO OTHER CARERS AT OAK DENE

KYABRAM
ON

WEDNESDAY FEBRUARY 21ST, 2024
AT 10AM TO 12PM
NO COST

RSVP 19th of February
Claire @ KCLC PH:58520000
Candy & KDHS: 0434 363 167

ARE YOU A CAREGIVER?

Numerous individuals may not identify themselves as caregivers. Caregivers are those who offer unpaid assistance and care to family members and friends who have disabilities, mental health challenges, chronic conditions, substance abuse issues, terminal illnesses, or are aging. If this is you, please join us.



Community Living & Respite Services

After School & Vacation Program
for children with disability 6 - 18 yrs old

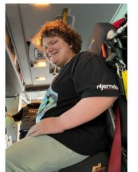
After School Program hours

Monday to Friday from 3pm to 5.30pm

Transport is available from school to Club Teen

Vacation Program hours

Monday to Friday from 8.30am to 5pm



Contact us now for 2024 spots

Call Bianca on 03 5480 2388

Email - bcole@clrs.org.au



Echuca Twin Rivers Specialist School
66 Wilkinson Drive
ECHUCA VIC 3564
Phone: (03) 5410 7700 press 1

echuca.twin.rivers.ss@education.vic.gov.au
<https://www.echucass.vic.edu.au>